



SHELBY® SHIFTER HANDLE

2015-2019 AUTOMATIC FORD MUSTANG

Step 1 : Remove The Rubber mat from in front of the shifter.

Step 2: Remove the beauty ring from around the shifter that is held down by clips. Pull up on the front and use a plastic pry bar to assist with the sides. Once you have the sides lifted, slide it toward the front of the car to get the rear tab out from under the back edge.

Note: Use caution when removing the beauty ring to not damage the clips, tab or the interior.

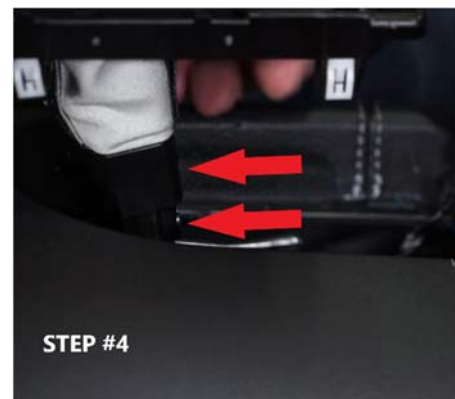


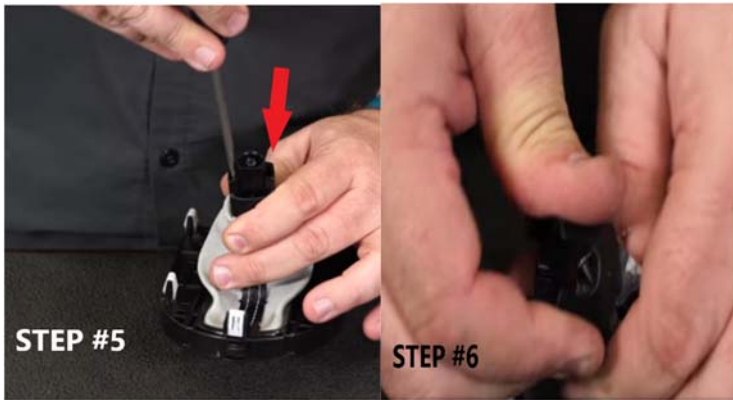
Step 3: Remove the base plate, that is held down by clips, by pulling up on the front and use a plastic pry bar to assist with the sides.

Step 3a: Unplug the base plate. The plug is located on the front of the base plate. You will have to press the tab, then pull it down and out of the base plate

Note: Use caution when removing the base plate to not damage the clips or the interior.

Step 4: Lift the shifter boot. Once you have the shifter boot lifted as high as it will allow, remove the two small screws in the front of the shifter handle at the base with a short phillips screw driver. Be sure not to drop or lose these screws as they will be re-used later. Now that the screws are removed, you can remove the shift handle.



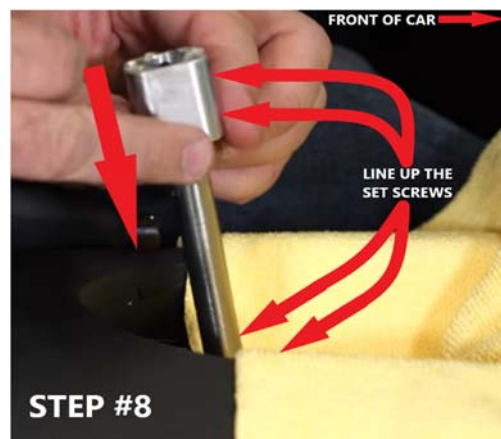
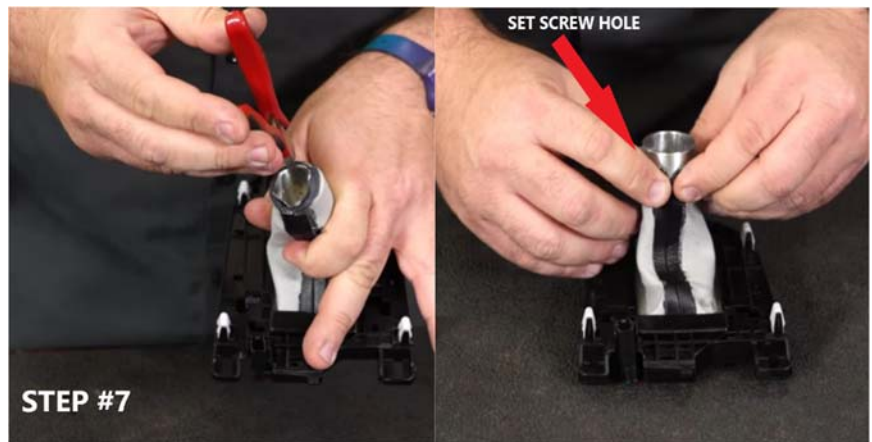


Step 5: Using a small flat blade screw driver, press on the two tabs on each side of the retainer, on the bottom of the shift handle, to release the shift handle from the shifter boot. The stock shifter handle is no longer needed. *Note: Use caution to not damage the shifter boot. It is reused.*

Step 6: Once the shifter handle is out of the shift boot it is time to remove the retainer by using your thumbs and breaking the glue

that holds the shifter boot leather to the retainer. Discard retainer as it is no longer needed.

Step 7: Make a small relief cut at the end of the shifter boot to allow the larger Shelby Shifter handle fit in the shifter boot. Now that the relief cut is made, insert the bottom of the Shelby shifter handle down into the shifter boot so that the set screw is facing the side of the shifter base where the P R N D S indicator is on. Press the shift boot onto the handle enough so that it will reveal the set screw hole in the side of the shift handle.



Step 8: Time to install the Shelby Shifter handle retainer. *Note: make sure to lay a rag or something down in the shifter location in the center console to prevent dropping the small screws.*

Slide the shifter handle retainer onto the stock internal shifter lever with the two screw hole facing the radio and the slot facing the driver seat. Slide the retainer down until it lines up the screw holes with the screw holes on the stock internal shifter lever. Install the two retainer screws.

Step 9: Place the small spring into the bottom, towards the back, of the Shelby Shifter handle. The lubricating grease will hold the springs in place. Slide your new Shelby Shift handle down onto the stock internal shifter lever by lining up the shifter handle with the shifter retainer so that the shift handle retaining screw lines up with the slot on the shifter retainer and the springs go into the spring holes. Once you have the shifter handle retaining screw hole over the slot on the retainer, install the retaining screw using the supplied allen hex key. Then test the shifter to insure that it is operating properly.



Step 10: Plug in the Shifter base plate. Then reinstall the base plate into the center console, snapping it into place.

Step 11: Reinstall the beauty ring by sliding the rear of the beauty ring into its slot then snap the rest of the beauty ring down into place.

Step 12: Reinstall the rubber mat.



Step 13: If you have the Shelby "T" handle shifter, place a generous amount of lock tight on the threads of the shift handle. Then thread the "T" Handle onto the shifter handle until it is as far as it will go while keeping the logo straight.

THANK YOU FOR YOUR PURCHASE

